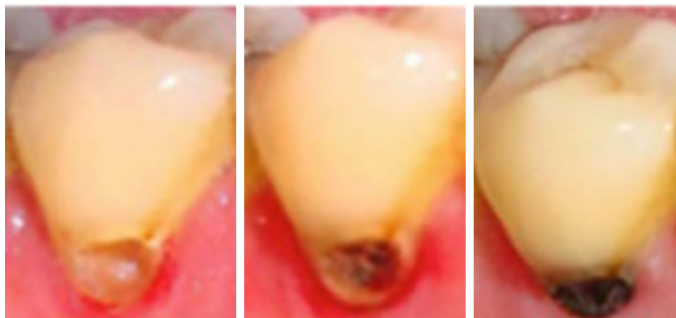


Silver Diamine Fluoride (SDF)

A Non-invasive Treatment for Tooth Decay

Silver Diamine Fluoride (SDF) is made up of fluoride and silver particles to help stop cavities from getting worse. SDF stops cavities by killing the bacteria in the tooth that causes decay and by remineralizing the tooth with fluoride. SDF can be used by a dental or medical provider.



Day 0

Day 1

Week 1

HOW IS SDF APPLIED?

Dry tooth, apply a small amount of the SDF to area of concern, allow SDF to absorb, and wipe off remaining SDF. A separate fluoride varnish can be placed over the area or all teeth after SDF is applied. The fluoride varnish helps remineralize and prevent cavities in other parts of the mouth and masks any bad taste from SDF.

WHAT ARE THE BENEFITS SDF?

- SDF treatment is quick and painless.
- SDF is a good option for non-dental clinicians to support their patient's oral health with minimally invasive cavity management approaches.
- SDF can stop cavities from getting worse.
- SDF delays or prevents the need for invasive dental treatments like fillings.

WHAT ARE THE RISKS OF SDF?

- SDF will permanently stain the cavity black. The black color means the treatment is working. If SDF accidentally gets on gum, lips or skin, it will temporarily stain the area brown for 1 to 3 weeks. Healthy parts of teeth will NOT be stained.
- SDF contains silver and should NOT be used on person with a silver allergy.
- SDF will NOT be used if the nerve of the tooth is exposed.
- SDF might not stop tooth decay and the tooth will require further treatment such as a repeat of SDF, a filling, crown, root canal treatment, or extraction.

